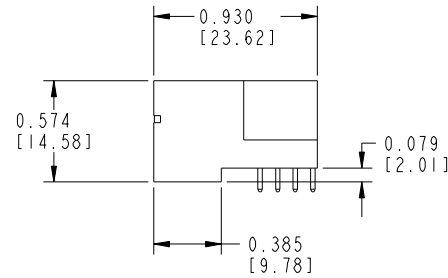
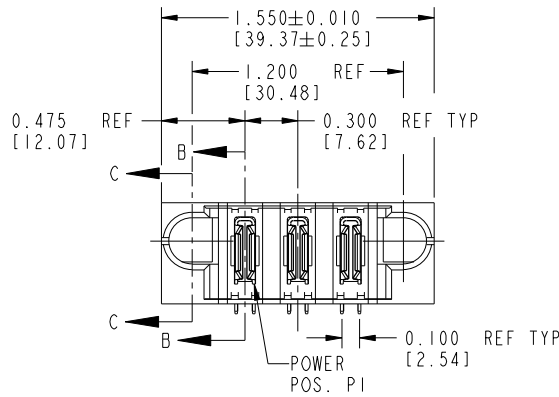
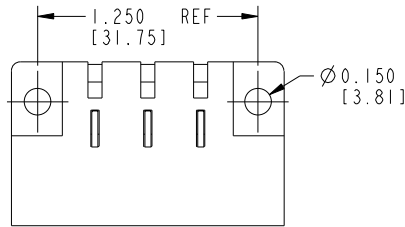


Tous droits strictement reserves. Reproduction ou communication a des tiers interdite sous quelque forme que ce soit sans autorisation écrite du propriétaire. Propriete de c FCI. Droits de reproduction FCI.



All rights strictly reserved. Reproduction or issue to third parties in any form whatever is not permitted without written authority from the proprietor. Property of FCI. Copyright FCI.

PRODUCT No.	ROWS	POWER				
		E1	P1	P2	P3	E2
51812-001	D C B A					
Note: ①						



CODE	CONTACT TYPE
PA	POWER

mal'1 code				NOTE 1		tolerances unless otherwise specified		CUSTOMER COPY		www.fciconnect.com		
ltr	ecn no.	dr	date	linear	.XX±.01/0.X±0.3		projection	title		3ACP		
A	V12104	JWS	7/23/01		.XXX±.005/0.XX±0.13			RIGHT ANGLE SOLDER HEADER		product family		code
B	DG05-0125	GuoJM	05/20/05		.XXX±.0020/0.XXX±0.051					PwrBlade		213
C	DG07-0396	SH	10/08/07		°±2°			INCH/MM		size		sheet
				dr	J. SHAFFER	7/23/01	scale		dwg no		1 OF 2	
				enr	E. TREECE	7/23/01	1:1		51812-001			
				chr	E. TREECE	7/23/01			A			
				appd	E. TREECE	7/23/01						
sheet index		revision sheet		C	C					cage code		
1		2		i		2				22526		

Pro/E

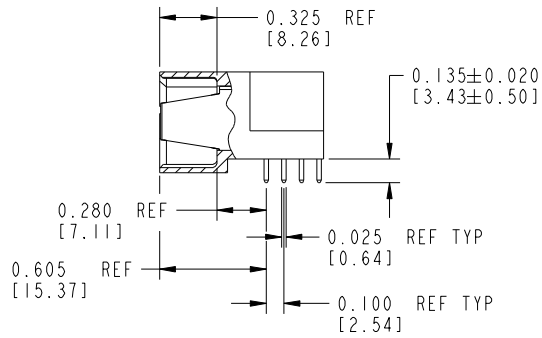
cage code 22526

Tous droits strictement réservés. Reproduction ou communication à des tiers interdite sous quelque forme que ce soit sans autorisation écrite du propriétaire. Propriété de c.FCI. Droits de reproduction FCI.

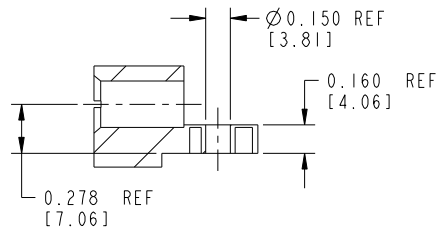


All rights strictly reserved. Reproduction or issue to third parties in any form whatever is not permitted without written authority from the proprietor. Property of FCI. Copyright FCI.

PRODUCT NUMBER  
51812-001--  
Note: ①



SECTION B-B



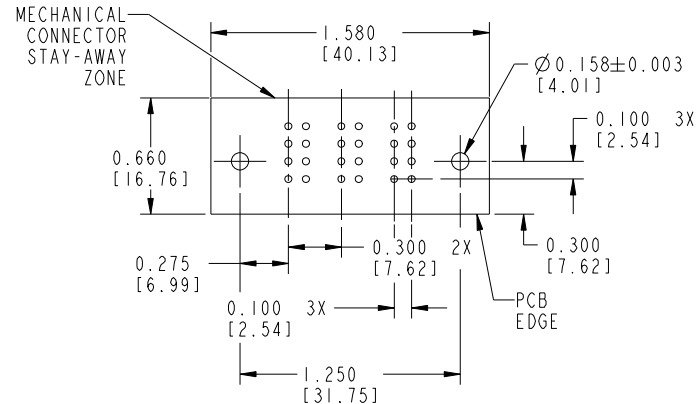
SECTION C-C

CONNECTOR NOTES:

① FOR ADDITIONAL INFORMATION, REFER TO DRAWING NUMBER 51812.

PCB NOTES:

2. ALL DIMENSIONS ARE BASIC UNLESS OTHERWISE SPECIFIED.
3. ALL THROUGH HOLES ARE LOCATED WITH A TRUE POSITION OF 0.004 [0.10]
4. ALL HOLE DIAMETERS ARE FINISHED HOLE SIZE
5. Ø0.158[4.01] THROUGH HOLES ARE UNPLATED
6. Ø0.0453±0.0010 [1.151±0.025] DRILLED HOLES PLATED WITH 0.0003 [0.008] MIN SnPb or Sn OVER 0.001 [0.03] TO 0.003 [0.08] Cu PLATING TO ACHIEVE A Ø&d853:SUPP\_51552-001-PCB HOLE.



RECOMMENDED PCB LAYOUT

mal't code				NOTE 1		tolerances unless otherwise specified		CUSTOMER		FCI	
ltr	ecn no.	dr	date	linear	.XX±.01/0.X±0.3	projection	COPY		www.fciconnect.com		
c				linear	.XXX±.005/0.XX±0.13	projection	title		3ACP		
				angles	.XXX±.0020/0.XXX±0.051	projection	RIGHT ANGLE SOLDER HEADER		product family		
				dr	0°±2°	INCH/MM	Pwr Blade		code		
				enr	J. SHAFFER 7/23/01	scale	A		213		
				chr	E. TREECE 7/23/01	1:1	size		dwg no		
				appd	E. TREECE 7/23/01		51812-001		sheet		
sheet index		revision sheet								2	

cage code 22526

Pro/E